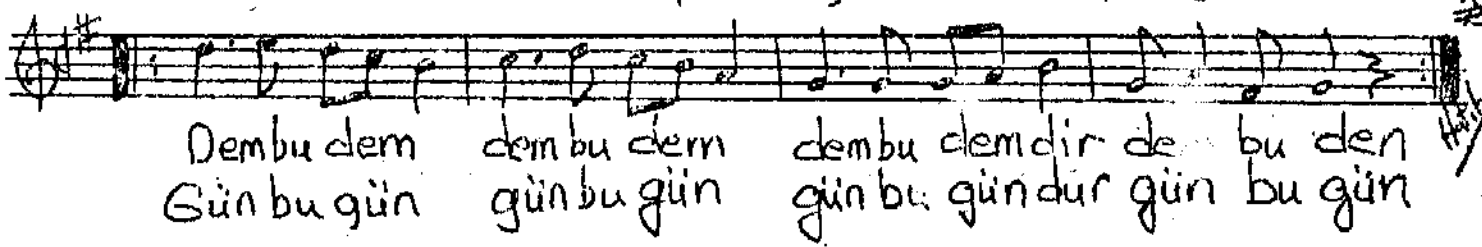
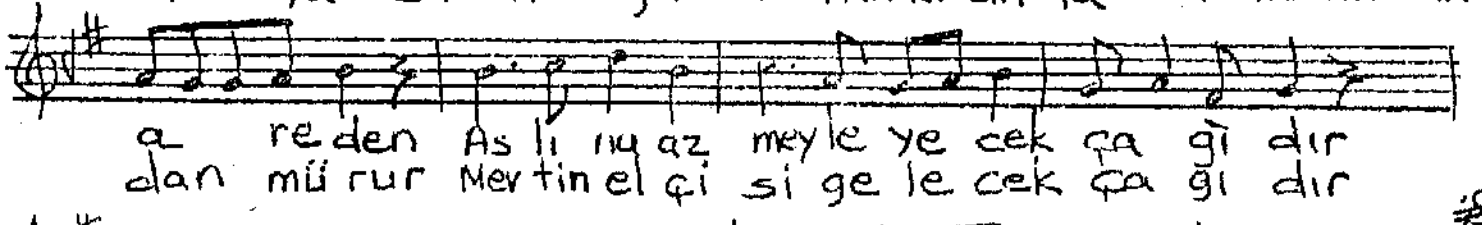
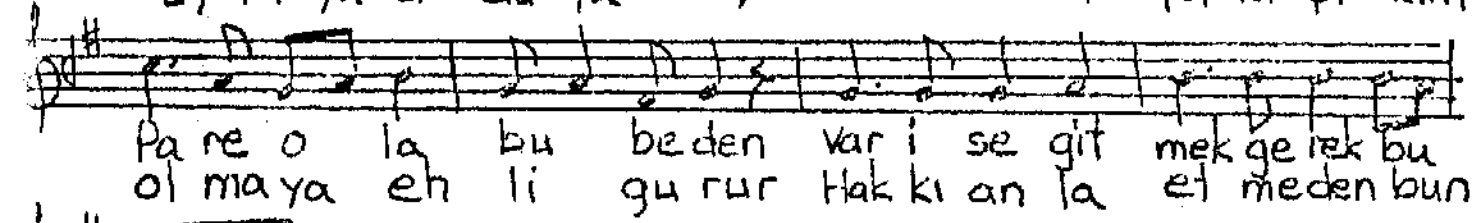
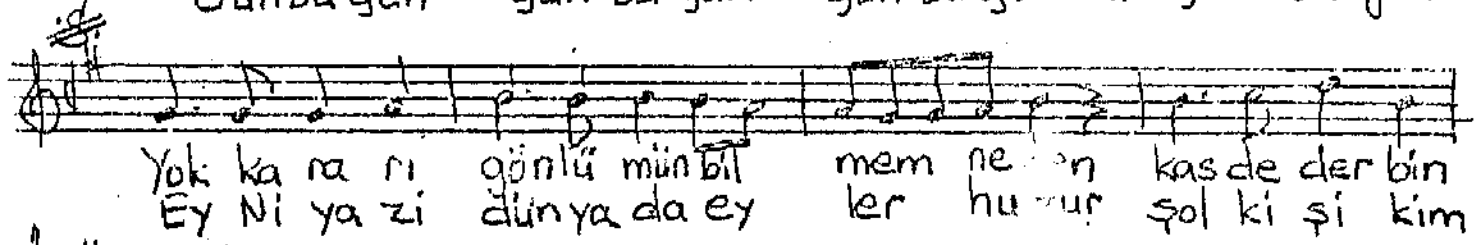
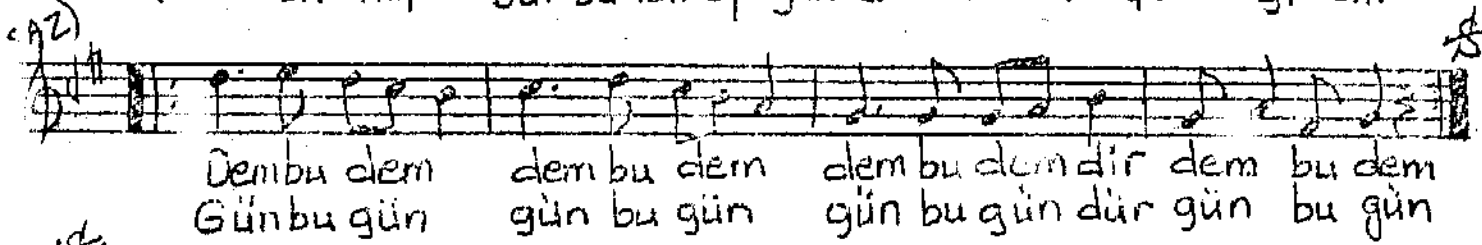
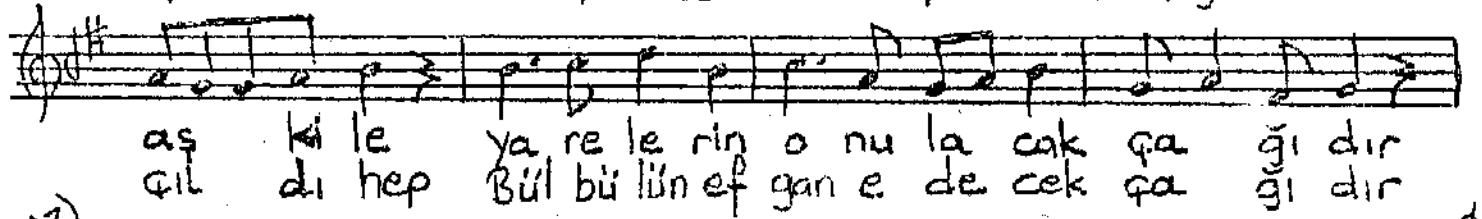
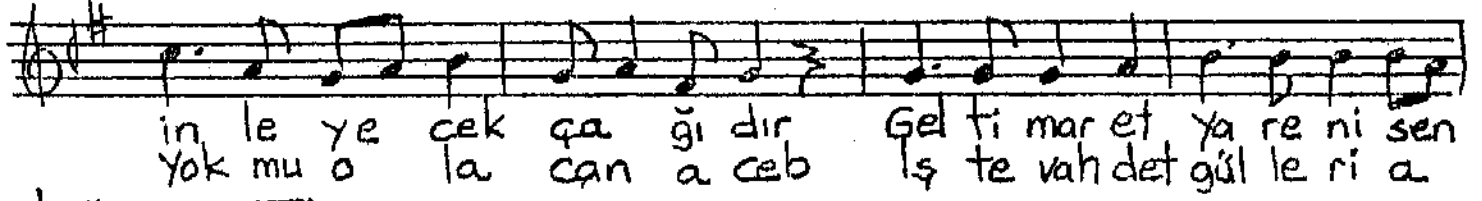



Sofyan

RAST İLÂHİ  
(inile ey dertli gönül inile)

Beste: ?

Güfte: Niyazî Musrî



 Niyazî Musrî

İNİLE EY DERTLİ GÖNÜL İNİLE  
EHL-İ DİRDİN İNLEYECEK ÇAĞIDIR  
GEL TİMAR ET YÂRENİ SEN AŞK İLE  
YÂRELERİN ÖNÜLACAK ÇAĞIDIR

ŞOL Kİ GAFLETLE YATIP ETMEZ TAREH  
GÖVDESİNDE YOK MU OLA CAN ACEB  
İŞTE VAHDET GÜLLERİ AÇILDI HER  
BULBÜLÜN EFGAN EDECEK ÇAĞIDIR

SEN NEDİM İDİN EZEL OL ŞÂH İLE  
İMTİHAN İÇİN GELDÜSÜN BU İLE  
İNLEMEN SANA HARÂŞIR DİRD İLE  
HEM GÖZÜN KAN AĞLAYACAK ÇAĞIDIR

YOK KARARI GÖNLÜMÜN BİLMEM NEDEN  
KASDEDER BİN PÂRE OLA BU BİDEN  
VAR İSE GİTMEN GEREK BU ÂREDEN  
ASLINA AZMEYLEYECEK ÇAĞIDIR

EY NİYAZİ DÜNYÂDA EYLER MUZÜR  
ŞOL KİŞİ KİM OLMAYA EHL-İ GURÜR  
HAKKI ANLA ETMEDEN BUNDAN UBÜR  
MEVTİN ELÇİSİ GELECEK ÇAĞIDIR